

High School Profile 2022 → 2023



Mission

The International School of Lausanne (ISL) is a non-profit, English-language day school that emphasises academic excellence and rigour in a supportive school and family environment. It prepares students for a global education and entrance to the best universities in the world. At present, there are approximately 900 students enrolled and many parents are employed to work in international companies in Lausanne or along the Swiss Riviera. The School is a leader in European international education with highly professional, dedicated teachers. Our Mission puts the learner firmly at the centre of everything that we do.

The International School of Lausanne is committed to excellence in education. We strive to recognise the unique potential of each student, and to equip them to play an active and responsible role in a complex, multicultural world.

Students and faculty

The student body at the International School of Lausanne consists of approximately 900 students from the ages of 3 to 18. It is comprised of a Primary School, a Middle School and a High School. The High School has approximately 96 students in each year group. There are over 65 nationalities represented within the student body, the largest groups being Switzerland, USA, UK, France, Italy, Spain, Netherlands, India, Canada, Germany, Brazil, Australia, and rest of the world. The Secondary School faculty consists of approximately 79 teachers who originate from Australia, Canada, Denmark, France, Germany, UK, Hungary, Ireland, Italy, Poland, Singapore, Spain, Switzerland, the Netherlands, USA, and Venezuela. The student/ teacher ratio in the High School is 5:1, and the median class size is approximately 12.

Accreditations

Since 1981, ISL has been accredited by the Council of International Schools (CIS) and the New England Association of Schools and Colleges (NEASC). The most recent accreditation visit took place in April 2022, when the Primary and Secondary Schools underwent a joint IB, CIS and NEASC visit.



Chemin de la Grangette 2
1052 Le Mont-sur-Lausanne
+ 41 21 560 02 02
info@isl.ch

www.isl.ch
ACT code 872930
CEEB code 796540
UCAS code N45009D

Contacts

Director
Frazer Cairns
+41 21 560 02 11
fcairns@isl.ch

Secondary School Principal
Simon Foley
+41 21 560 02 56
secondary@isl.ch

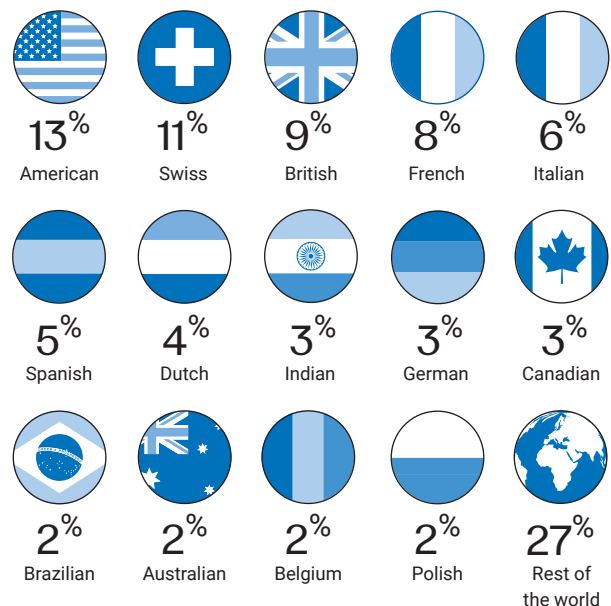
High School Principal
Sarah Gifford
+41 21 560 02 25
hsprincipal@isl.ch

Academic Guidance Counsellors
Steven McArthur
+41 21 560 02 43
smcarthur@isl.ch
Katrina Edmunds
+41 21 560 02 32
kedmunds@isl.ch

Assistant Principal - IB Diploma Programme Coordinator
Michael Humphrey
+41 21 560 02 39
dpcoordinator@isl.ch

Assistant Principal - IB Middle Years Programme Coordinator
Darryl Anderson
+41 21 560 02 27
mypcoordinator@isl.ch

ISL students nationalities 2022



Chemin de la Grangette 2
1052 Le Mont-sur-Lausanne
+ 41 21 560 02 02
info@isl.ch

www.isl.ch
ACT code 872930
CEEB code 796540
UCAS code N45009D

	Middle Years Programme	Diploma Programme
Language A	English* French (both are a combined literature and language courses)	English A Language and Literature, English A Literature, French A Language and Literature, French A Literature
Language B	French*, Spanish, German	English B, French B, French ab initio, German B, Spanish B
Mathematics	Standard or Extended*	Mathematics: Analysis and Approaches, Mathematics: Applications and Interpretation (at SL only)
Individuals and Societies (Humanities)	Integrated Humanities* (History, Geography, Economics)	Economics, Environmental Systems and Societies (ESS), Geography, History, Global Politics
Natural Sciences	Biology, Chemistry, Physics	Biology, Physics, Chemistry, Computer Science, Environmental Systems and Societies (ESS), Design Technology
Arts	Visual Arts, Music, Theatre	Visual Arts, Music, Theatre, or an additional subject from above (except mathematics)
Design Technology	Product Design, Digital Design (Computer Programming)	
Physical Education	Physical and Health Education*	*denotes a compulsory course

Middle Years Programme and Diploma Programme

The International School of Lausanne is an International Baccalaureate (IB) World School, offering three IB programmes: the Primary Years Programme (PYP), the Middle Years Programme (MYP), and the Diploma Programme (DP). In the High School, students follow the last two years of the MYP in Year 10 and Year 11 (Grade 9 and Grade 10) and the two year pre-university Diploma Programme in Year 12 and Year 13 (Grade 11 and Grade 12). Approximately 97 percent of ISL students will follow the full Diploma Programme, with a few students in each year taking only selected courses, with the aim of achieving the ISL High School Diploma.

Theory of knowledge (TOK)

A course that aims to stimulate critical reflection on knowledge.

Creativity, activity, service (CAS)

CAS provides a valuable compliment to the academic programme. Students develop their skills and talents through at least five experiences across the two years, of which one must be a long-term collaborative project. ISL is committed to service learning and students are required to engage in at least two service experiences.

Extended essay

A piece of original research of 4000 words, written with the guidance of a supervisor.

Grading system, weighting, and class rank

Students in the IB Diploma Programme are graded on a seven-point scale with seven being the maximum. Each student's application to a school, college, or university is accompanied by a full transcript detailing achievement grades awarded in all subjects from Year 10 to Year 13. Neither GPA nor class rank are calculated at ISL. There is no appropriate ranking system that would adequately account for transitory international students, many of whom have relocated from countries with different grading systems.

Graduation requirements

All ISL students undertake the High School Diploma, with the majority also taking the International Baccalaureate Diploma. The course requirements for graduation with the ISL High School Diploma are as follows:

- 4 years of a first language
- 4 years of mathematics
- 4 years of science
- 4 years of social science
- 2 years of a second language
- Completion of the CAS programme

In order to receive an ISL High School Diploma, students must meet the following grade requirements:

- In Year 10 and Year 11, as the first semester grade is a progress grade, students must achieve a final second semester grade of 3.0 or above in each of the subjects above.
- In Year 12 and Year 13, students must achieve an average grade of 3.0 or above each year, in each individual subject (taken as an average of the two semester reports).

Students who do not meet these requirements in an individual subject, but who are awarded a grade of 3.0 or above by the IB in that subject following the final IB Diploma Programme examinations, will receive an ISL High School Diploma awarded in July of their graduation year.

Approach to behaviour

The school values of respect, honesty, equality, self-control, and care and concern for others permeate the school culture and provide the foundation for behaviour expectations. ISL uses a restorative approach to discipline, and most incidents are managed internally through conversation and reconciliation. In some situations, students may have a day of reflection out of school as part of the reconciliation process. Only in severe cases will a student be suspended, and only suspensions are included in student records shared outside of school.



IB Diploma Programme results 2022



93

IB Diploma candidates



100%

Candidates who achieved the IB Diploma



45/45

Highest IB Diploma score achieved



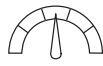
33%

Bilingual IB Diploma candidates



35%

ISL candidates achieving 40 or more



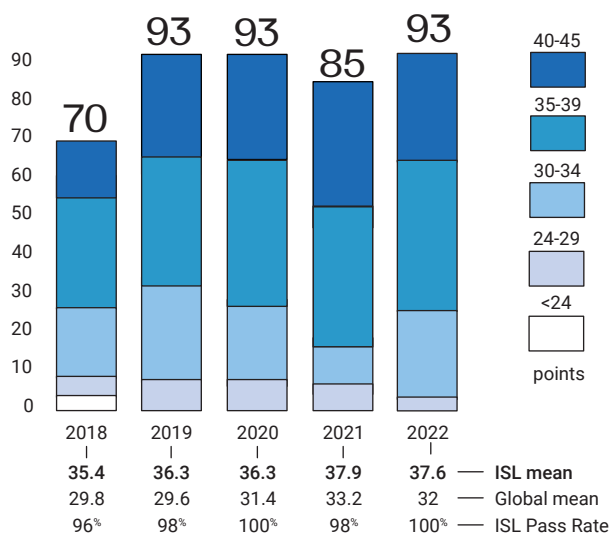
37.6

Mean score achieved by ISL candidates

32

Mean score achieved by candidates worldwide

IB Diploma Programme candidates and results 2017-2022



Service learning programme

Students in all years are required to participate in service learning. This requirement is strengthened in the final two years of the school, where students must plan and initiate a project, giving them the opportunity to develop leadership, collaboration and communication skills. Some examples of recent local organisations that the students work with for their service projects are: La Soupe Populaire, EVAM refugee centre and Caritas Vaud.

Standardised testing

ISL is not a test centre for the SAT nor the ACT. Students must make independent arrangements outside of school to take these tests. There is limited opportunity to take the ACT in Switzerland. Given the variety of mother-tongue languages, cultures, scholastic backgrounds, and destinations of our students, we do not use standardised tests nor are students exposed or accustomed to multiple choice testing.



Activities

Extra-curricular and co-curricular activities

The International School of Lausanne places great emphasis on activities beyond the classroom. ISL encourages students to engage in a diverse range of activities to enhance their academic curriculum, equipping them with skills that will prepare them for the future. Students throughout the Secondary School willingly participate in a wide variety of extra-curricular and co-curricular projects.

Creative activities

ISL provides opportunities for students to develop their creativity through a range of activities including: Model United Nations, French and English theatre productions, Student Council, Debate, School Newspaper, Literary Magazine, Mathematics Teams, Visual Arts, Concert Band, Stage Band, Choir and more.

Physical activities

ISL Competitive Sports teams include: basketball, football, athletics, skiing, golf netball, badminton, swimming and gymnastics. Students also participate in a number of activities with clubs in the local community. The school offers recreational based movement activities that include: aerial silks, dance, HIIT training, tennis and yoga.

ISL university acceptances 2019-2022

Europe

- Bocconi University, Italy
- Culinary Arts Academy, Switzerland
- Ecole cantonale d'art de Lausanne ECAL, Switzerland
- Ecole Hôtelière de Lausanne, Switzerland
- École Polytechnique Fédérale de Lausanne, Switzerland
- EDHEC, France
- EICAR, Paris
- Erasmus University, Netherlands
- ESADE, Barcelona, Spain
- ESMA, Lyon, France
- Franklin University, Switzerland
- Université de Genève, Switzerland
- University of The Hague, Netherlands
- University of Heidelberg, Germany
- HEC, Université de Lausanne, Switzerland
- IE University, Madrid, Spain
- Istituto Marangoni, Milan, Italy
- Jagellonian University, Krakow, Poland
- Leiden University, Netherlands
- L'Institut Supérieur des Arts Appliqués, Paris, France
- Maastricht University, Netherlands
- Technical University of Munich, Germany
- Tilburg University, Netherlands
- Université de Lausanne, Switzerland
- University College Utrecht, Netherlands
- University of Amsterdam, Netherlands
- University of Groningen, Netherlands
- University of Twente, Netherlands
- Technical University, Eindhoven, Netherlands
- Technical University, Munich, Germany
- University of St. Gallen, Switzerland
- University of Twente, Netherlands
- Webster University, Switzerland

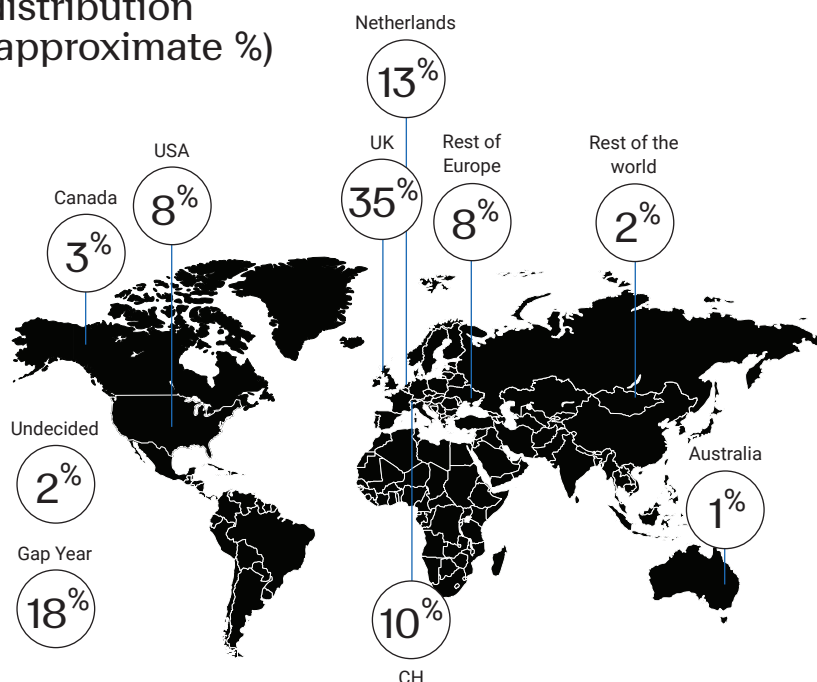
United Kingdom

- Birmingham Conservatory
- Durham University
- University of the Arts, London
- Glasgow Caledonian University
- Imperial College London
- Istituto Marangoni, London
- King's College London
- Kingston University
- Lancaster University
- London School of Economics and Political Sciences
- Loughborough University
- The MGA Academy of Performing Arts
- Newcastle University
- Oxford Brookes University
- Queen Mary, University of London
- Royal Holloway, University of London
- SOAS, University of London
- University College London
- University of Bath
- University of Birmingham
- University of Brighton
- University of Bristol
- University of Cambridge
- University of Edinburgh
- University of Exeter
- University of Glasgow
- University of Kent
- University of Leeds
- University of Liverpool
- University of Manchester
- University of Nottingham
- University of Oxford
- University of Sheffield
- University of St. Andrews
- University of Surrey
- University of Sussex
- University of Warwick
- University of Westminster
- University of York

United States of America

- Amherst College
- Barnard College
- Boston College
- Boston University
- Bowdoin College
- Brandeis University
- Brown University
- Colorado School of Mines
- Cornell University
- George Washington University
- Georgetown University
- Johns Hopkins University
- Lehigh University
- Marist College
- New School, Parsons, New York
- New York University
- Northeastern University
- Northwestern University
- Purdue University
- Rensselaer Polytechnic Institute
- Skidmore College
- Stanford University
- Syracuse University
- Tulane University
- Tufts University
- University of California, Berkeley
- University of California, Los Angeles
- University of Chicago
- University of Colorado at Boulder
- University of Michigan
- University of Notre Dame
- University of Pennsylvania
- University of Virginia
- Virginia Tech University
- Washington University in St. Louis
- Worcester Polytechnic Institute
- Yale University

University destinations geographical distribution (approximate %)



Canada

- McGill University
- Queen's University
- University of British Columbia
- St Francis Xavier University
- University of Toronto
- Western University
- York University

Rest of the world

- Academy of Music Education and Performance, Israel
- American University of Beirut, Lebanon
- Australian National University, Australia
- Kansai University, Japan
- Melbourne University, Australia
- Nanyang Technical University, Singapore
- New York University, Abu Dhabi

Year 13 grade distribution table for class of 2022

		Grades						
	Subject	Number of candidates	7	6	5	4	3	2
Group 1	ENGLISH A: Lang and Literature HL	33	4	22	7			
	ENGLISH A: Lang and Literature SL	46	4	29	9	4		
	ENGLISH A: Literature HL	13	3	6	4			
	ENGLISH A: Literature SL	4	2		1	1		
	FRENCH A: Lang and Literature HL	5	1	2	1	1		
	FRENCH A: Lang and Literature SL	9	2	3	2	2		
	FRENCH A: Literature HL	4	2	1		1		
	FRENCH A: Literature SL	11	1	5	4	1		
	MOD. GR A: Literature self taught SL	2				1	1	
Group 2	ENGLISH B HL	1		1				
	FRENCH AB. SL	8	3	1	3	1		
	FRENCH B HL	7	1	6				
	FRENCH B SL	37	17	18	2			
	GERMAN B HL	3		3				
	GERMAN B SL	2		1	1			
	SPANISH AB. SL	1	1					
	SPANISH B HL	6	4	2				
	SPANISH B SL	2		2				
Group 3	ECONOMICS HL ENGLISH	39	11	19	8		1	
	ECONOMICS SL ENGLISH	15	5	6	4			
	GEOGRAPHY HL ENGLISH	16	2	9	4	1		
	GEOGRAPHY SL ENGLISH	18	8	7	2		1	
	GLOBAL POLITICS HL ENGLISH	11	4	4	3			
	GLOBAL POLITICS SL ENGLISH	5	1	2	1	1		
	HISTORY SL ENGLISH	7	2	4				
	HISTORY AMERICAS HL ENGLISH	12	6	3	3			
Group 4	BIOLOGY HL ENGLISH	26	9	11	4	2		
	BIOLOGY SL ENGLISH	20	4	6	6	2	2	
	CHEMISTRY HL ENGLISH	25	5	11	4	4		1
	CHEMISTRY SL ENGLISH	8	4	1	2	1		
	COMPUTER SC. HL ENGLISH	3	2	1				
	COMPUTER SC. SL ENGLISH	6	3	1	2			
	DESIGN TECH. HL ENGLISH	12	1	5	6			
	DESIGN TECH. SL ENGLISH	4		1	3			
	PHYSICS HL ENGLISH	25	8	8	2	5	2	
	PHYSICS SL ENGLISH	9	1	5	3			
Group 5	MATHEMATICS ANALYSIS AND APPROACHES HL ENGLISH	25	8	7	9	1		
	MATHEMATICS ANALYSIS AND APPROACHES SL ENGLISH	27	11	9	7			
	MATHEMATICS APPLICATIONS AND INTERP SL ENGLISH	44	8	22	12	2		
Group 6	FILM SL ENGLISH	1	1					
	MUSIC HL ENGLISH	3	1	1	1			
	MUSIC SL ENGLISH	1	1					
	THEATRE HL ENGLISH	2	1	1				
	THEATRE SL ENGLISH	1			1			
	VISUAL ARTS HL ENGLISH	14	1	6	6	1		
	VISUAL ARTS SL ENGLISH	3		3				